

CREATING A HOME PLAN RENDERING – PART 1

FEBRUARY 11, 2016 ECHO [LEAVE A COMMENT](#)

In this three part series, we will walk you through the artistic process of creating a home plan rendering!

We live in a visual world. Where seeing images and color brings ideas to life. When creating our [home plans](#), it's important that we offer a visual representation of our homes' exteriors. That's where our art illustrator comes in! The talented Anita Bice creates our gorgeous color renderings that color life and depth into flat drawings.



Meet the Artist

Anita Bice has worked as a freelance commercial illustrator for over 30 years from her home-based studio in Moody, Alabama. Her love for art was nurtured by a high school art teacher and it was this teacher that encouraged her to major in Art. She received

her BA degree in Art and Business from Samford University in Birmingham, Alabama, continuing on to Chicago, Illinois for further study at the American Academy of Art. There she majored in architectural illustration.

As a commercial illustrator, Anita paints in several artistic styles and media in order to accommodate the demands of each project. The most requested media has evolved from the traditional painting techniques of watercolor, pen-and-ink, and mixed-media-airbrush, to primarily digital pen-and-ink renderings and digital painting.

To see more of her work, visit her website at www.anitabice.com and follow her Facebook page at [Anita Bice Art](#).

Anita will walk us through her artistic process to create the rendering for our [Design in Progress](#) – [The Kingston #1325](#).

Here is a 'snapshot' of my rendering process. The following steps show a more in-depth progression. I hope you enjoy!

Architectural Rendering Project



Pen and Ink



Color

Plans supplied by Donald A. Gardner, and 3D home constructed.



Using the architectural plans supplied by my client, I construct the home in a 3D rendering software program. This allows my measurements to be extremely accurate. In the 'old days' before the aide of the computer, I constructed the drawings on perspective grids/charts. If I sent multiple views, each one had to be constructive separately. Now with the use of computer animation, I can quickly rotate the view in order to send several views. I'll usually send between 4-7 views from which to choose as the base for the pen-and-ink rendering.



View 1



View 2



View 3



View 4



View 5



View 6

Check back for our second installment in this series next week! We will select a view and begin layering shadow and landscaping!

CREATING A HOME PLAN RENDERING – PART 2

FEBRUARY 16, 2016 [ECHO](#) [LEAVE A COMMENT](#)



-
-

In this three part series, we walk you through the artistic process of creating a home plan rendering!

Do you ever look at our gorgeous home plan renderings and wonder about the artist who creates them? Or the process that she goes through to produce such detailed images? We are continuing our step-by-step walk-through with Anita Bice to learn just that!

Part 2: Picking up where we left off, the client was given several views to chose from.

This is the blackout view chosen by my client.



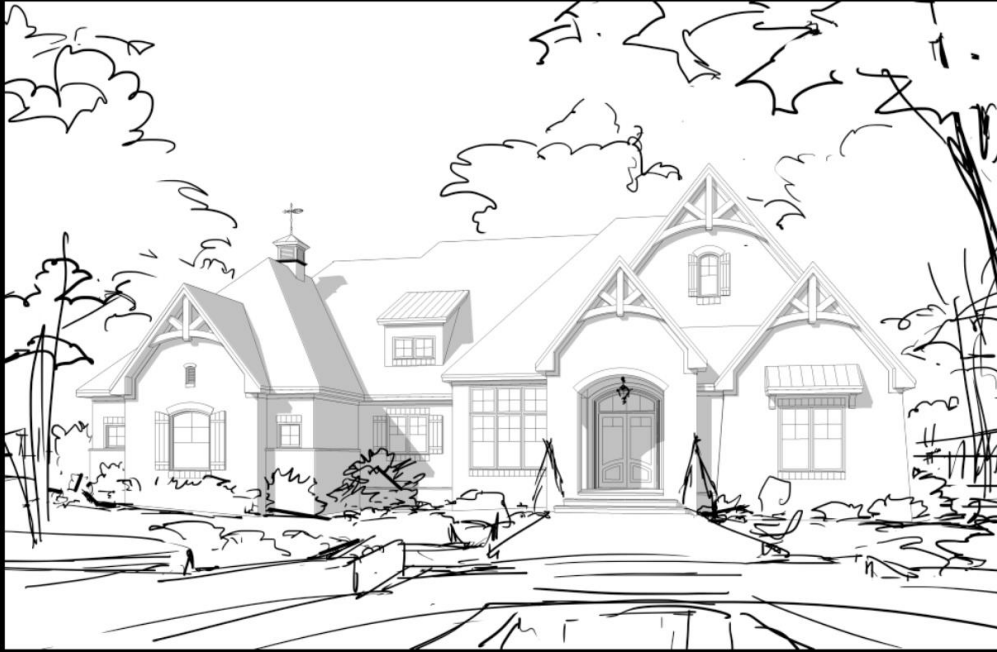
Shadows are adjusted to help create the 3D look. It's amazing that shadows can be shown to mimic a certain time of day or a particular season. I usually try to adjust them to best compliment the features of the home itself and to give the rendering the most definition and depth. I'll hide the shadows by turning that layer off until I'm ready to ink them in.



This is a demo of ‘used-to-do’s’ and ‘now-a-days’! I used to overlay my pencil drawing of the constructed house with a piece of translucent drafting/tracing paper. Next, I would use a pencil to sketch in ideas of the landscaping, then finalize the quick sketch with a Sharpie marker.

Now, I create a new layer in Photoshop, label it ‘landscape sketch’, and choose a digital brush from a library of brush tips, one that looks like and acts like a marker. A pressure-sensitive graphics tablet and stylus are used to mimic hand-drawn lines that can be erased and re-sketched until the entourage is satisfactorily mapped in.

I sort of play a game with myself as I sketch. If I were a visitor coming to visit the owners of this home, what special touches would tell me that this home is well-loved and cared for? What compositional elements will lead the viewer’s eye to the front door, inviting them inside? What landscaping elements (shrubs, trees, etc.) will support and enhance the special features of this home, not detract from them? I want the viewer of the rendering to feel that this home is loved, or that they can be the owner of such an inviting home. Each plan is unique, and I try to convey its uniqueness in the way that the rendering’s composition showcases the home’s design.



Before going digital, I would once again overlay the Sharpie sketch with translucent velum and begin inking by hand. Several years ago, I realized that I could ‘build’ my own digital brushes that look like my hand-drawn lines. I now have custom libraries of brushes that I have crafted to mimic my own hand-drawn inking and painting styles. In this stage, I have begun to lay in the hard, ink lines.



More inking using 'Rapid-O-Graph like' lines, and brushes that mimic leaves and organic lines.



The landscaping is worked in gradually to compliment the house, the composition, and the illusion of 3-dimensionality.



Roughing in the foreground.

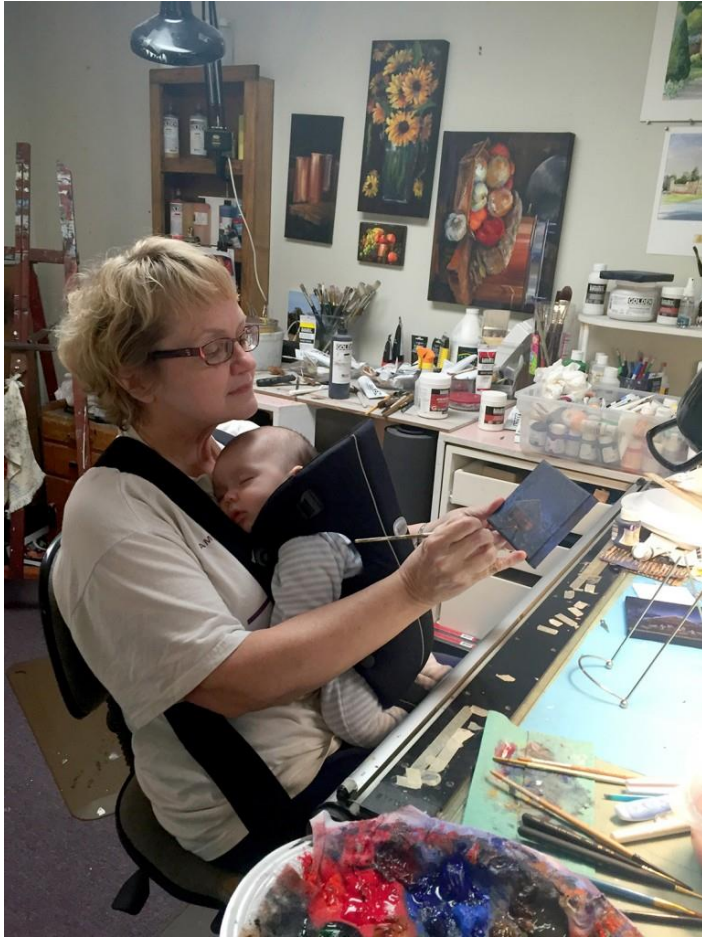


This is the final pen and ink. If this were the absolute final stage, I would work more on creating darker areas and more contrast. However, I have to leave areas that will allow color to peek through in the rendering stages to follow.



More about the Artist

Anita worked as an in-house illustrator until her first daughter was born. She then launched a freelance career in order to accommodate her growing family's needs. She is married with two daughters and just welcomed her first grandchild! Anita is passionate about her work and her family and finds a perfect balance for the two.



How Anita balances life and career. And possibly passes on some artistic talent.

Check back later this week for the final steps – adding color!

HOUSE PLANS, MISC.

CREATING A HOME PLAN RENDERING – PART 3

FEBRUARY 19, 2016 ECHO [LEAVE A COMMENT](#)

-

-

-

In this three part series, we walk you through the artistic process of creating a home plan rendering!

A home plan rendering really comes to life when color is added. See Anita's final steps as she colors in the sky and landscaping and selects a color scheme for the home's exterior.

Part 3 – Creating a Home Plan Rendering:

Here, I have begun to add color. I usually start with the sky because it immediately gives a 3D look. I have switched from my library of hardline black/white brushes to my color/painting brushes.



Beautiful color scheme for this house!



In some ways, this is like the adult coloring books that are so popular! It's very therapudic and satisfying to see the rendering coming to life. Coloring....I've done it all my life!



Previously I had said that everything is complete except for the icing on the cake....the flowers! However, I think it is the stage before lighting the candles on the cake....icing, when if there is too much, it can get a bit sickening.



The flowers and final touches have to be added carefully....enough to invite without being overwhelming. The 'candles' add just enough sparkle! This is the final rendering, if approved by the client. It's very easy to make any changes, now or in the future, because each building material occupies its own layer.



And a bit more from the artist:

Pot-n-Pans collection!



All original painting by Anita Bice – Acrylic on gallery-wrapped canvas.

You may be wondering, why Pots-n-Pans? Well, I met a lady who commissioned some pen and inks several years ago and we became friends. I later did a pastel portrait of her dog and a few more special projects. One of her requests came when she moved into a stately home in a beautiful neighborhood in Birmingham. In the kitchen, there was a very prominent wall which, unfortunately, was home to a very large fuse box. She asked if we could come up with a vertical composition that would cover it up. We settled on a stack of pots and pans, 24x48". After the painting had been hung in her kitchen for a few weeks, she called me back and said I needed to paint more pots-n-pans because of the compliments it was receiving. I'm now on about #38 in the series, and am earning a reputation as the 'Pots-n-Pans Lady'!!!



Anita Bice

Be sure to visit [Anita Bice Art](#) to view more of her collection and continue to admire her work through our beautiful home plan renderings!